

Weqas

ANNUAL CONFERENCE



17 JUNE 2025

Glamorgan Cricket Ground,
Sophia Gardens

LABORATORY EQA
& MANAGEMENT

CARDIFF
2Q25

Sponsors:

 **Abbott**

nova
biomedical

 **STERILAB**
SERVICES

Labgnostic
EQA

Getting there

The conference will be held in the **'Swansea Building Society Lounge'** of Glamorgan Cricket Ground in Sophia Gardens, Cardiff. Enter the site through Gate 5, located on the north west side of the stadium. The main reception can be found opposite the small car park.



By Car:

Glamorgan Cricket Ground (via Gate 5)
Sophia Gardens
Cardiff
CF11 9XR



Parking:

Limited parking spaces are available at Sophia Gardens Stadium Car Park (via Gate 5) and must be pre-booked by contacting us on 02921 832882. Additional parking can be found here:
<https://conference.weqas.com/about/useful-links/>



Arriving By Train:

Cardiff Central is a 25 minute walk or a short taxi ride to the Stadium. Additional train information can be found here:
<https://conference.weqas.com/about/useful-links/>

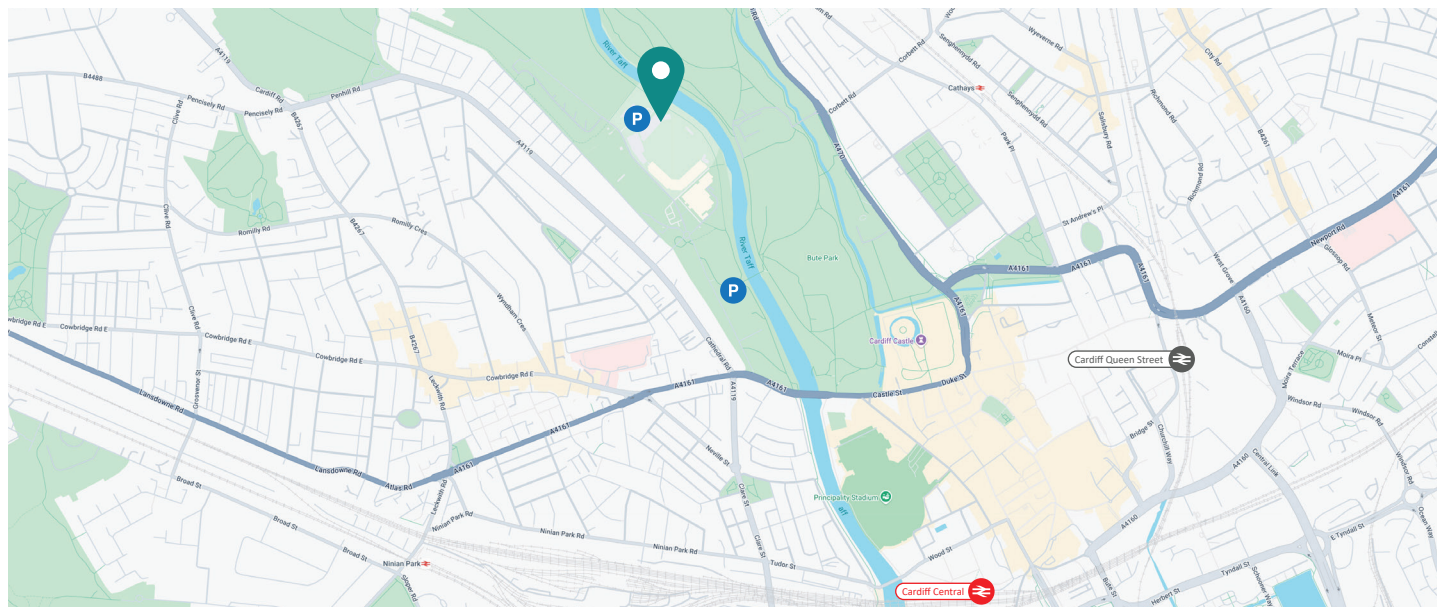


Arriving By Plane:

The Stadium is a 35 minute taxi ride from Cardiff Airport.



Map:



Map Key



Glamorgan Cricket Ground



Car park



Main Train station



Train station

Using the Conference Portal

We are committed to reducing our paper usage. Due to the success of the last couple of years, we are continuing to progress towards a paperless conference and will be using our conference portal. We will not be printing any presentations. After the conference, presentations will be available on <https://www.weqas.com/resourcelibrary/>.

How to access the conference portal

Scan the QR Code on the bottom right of your name badges or manually type the website. Open the link in your internet browser.

What is on the conference portal?

- View the event programme.
- Download the presentations.
- Download the posters displayed at the conference.
- Submit a question for a speaker.
- Submit your answer to one of the polls set by a speaker.
- Online feedback questionnaires.
- Request a CPD certificate.

You can access the presentations, submit questions in our Q&A section, and answer any poll questions through the QR code printed on the delegate badges that will be provided on the day. Below are the instructions on using the conference portal.

Download Presentations & Posters

A QR code will be printed on the bottom right of your name badge. Use your smartphone's camera to scan this image, you'll then be asked to open the link in your internet browser. Alternatively, you can manually type the website address that will be printed opposite the QR code.

This will take you to a webpage where you can select Day 1 or Day 2 (if applicable) and view the available presentations by clicking on the download link after the presentation title, you can also download the posters that are on display at the conference by selecting the 'Posters' tab towards the top of the page.

Q&A

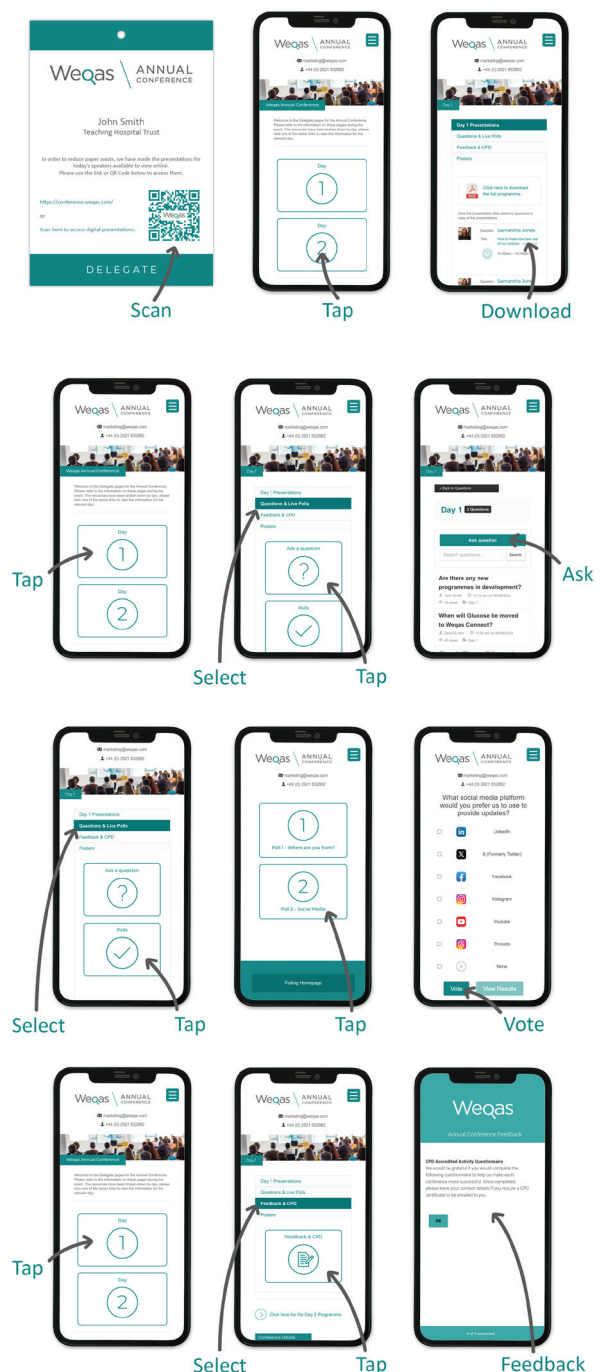
You will also see a tab for 'Questions & Live Polls'. By clicking the 'Ask a question' link, you can submit any questions you'd like to ask the speakers across both days of the conference. At the end of the talk, the speakers will aim to answer as many as they can in the time available.

Polls

Also, on the 'Questions & Live Polls' tab, we have added a 'Live Polls' link. This may be used by the speakers to get the views of delegates on a particular subject matter during a talk to support engagement.

Feedback & CPD Certificate

Finally, you will also see a tab for 'Feedback & CPD'. At the end of the conference, clicking the link on this tab will direct you to complete our online feedback questionnaire regarding your experience at our conference. This feedback will be used to help us make each conference more successful. By entering your name and email address at the end of this questionnaire you can request a CPD Certificate to be emailed to you.



Please Note: Times and schedule are a guide only and are subject to change.



Theme: Laboratory EQA & Management

Chair: David Housley



Meet and greet / Registration - 9:00am - 9:50am



Introduction / Welcome - 9:50am - 10:00am



Speaker: Gareth Davies & Samantha Jones

Title: EQA interpretation of Laboratory results



10:00am - 11:00am



Break - 11:00am - 11:20am



Speaker: Gareth Davies & Samantha Jones

Title: Case Studies Workshop



11:20am - 12:00pm



Speaker: Sally Benton

Title: Are our FIT assays good enough and what is the symptomatic threshold?



12:00pm - 12:45pm



Speaker: David Housley & Emma English

Title: Are our HbA1c assays good enough?



12:45pm - 1:25pm



Lunch - 1:25pm - 2:25pm



Speaker: David Ducroq

Title: Understanding Measurement Traceability and Uncertainty



2:25pm - 2:55pm



Speaker: Annette Thomas & Gareth Davies

Title: Getting the best out of your EQA data for ISO 15189:2022 compliance



2:55pm - 3:25pm

Industry Session & Refreshments - 3:25pm - 3:40pm



Speaker: Ceri Parfitt

Title: How are we ensuring the accuracy of our calculated parameters?



3:40pm - 4:10pm



Speaker: Gordon Avery

Title: TBI markers – the new kid(s) on the block



4:10pm - 4:45pm



Tea, Coffee & Close - 4:45pm



Annette Thomas

Director - Weqas

Annette Thomas is a Consultant Clinical Biochemist at Cardiff and Vale University Health Board with over 40 years' experience in Laboratory Medicine, over 20 years of which has been as Director of Weqas, a well-respected International EQA provider and Reference Measurement Laboratory.

Annette is also the National Point of Care (POCT) Clinical lead for Wales, a seconded position to the Wales NHS Executive responsible for delivering the strategy plan for POCT. She represents POCT on Welsh Government advisory Committees and chairs the National POCT Strategic Board and the POCT Delivery Group. She is a member of the International Federation of Clinical Chemistry and Laboratory Medicine (IFCC) Task Force on Global Lab Quality and past chair of the IFCC Committee on Analytical Quality.

She has previously held posts on the Executive Board of the European Committee for External Quality Assurance Programmes in Laboratory Medicine (EQALM), chair of the All Wales Clinical Biochemistry Audit Group and chair of the National Clinical Biochemistry and Laboratory Medicine (ACB) Audit Committee in the UK. In 2019 she received the EQALM Adam Uldall Award for her contribution to promoting quality in laboratory medicine and the Healthcare Science Lifetime Achievement award from the Welsh Government.



Gareth Davies

Deputy Director, Principal Biochemist, R and D Manager - Weqas

Gareth Davies is the Deputy Director, Principal Biochemist and Research and Development Manager at Weqas with over 15 years' experience in Laboratory Medicine. Gareth is responsible for new programme development and provides EQA interpretation, support, and troubleshooting. He is a current member of the National Clinical Biochemistry Audit Group, the All-Wales Clinical Biochemistry Audit Group, and the ACB Pre-Analytical Phase Special Interest Group (ACB PA SIG).



Samantha Jones

Operations Manager - Weqas

Samantha is the Operations Manager at Weqas with over 30 years' experience in Laboratory Medicine. Sam worked as a Biomedical Scientist at the Medical Biochemistry and Immunology Department at the University Hospital of Wales in Cardiff before moving to Weqas in 1998. Since 2010 she has been employed as the Operations Manager responsible for the day to day management of EQA / IQC services.

She is a current member of the IFCC Working Group on FIT, represents Weqas on 2 working groups (POCT and ISO 17043) at EQALM (The European Organisation for External Quality Assurance Providers in Laboratory Medicine) and represents Weqas at the United Kingdom Proficiency Testing Committee. She was also one of the two UK BSI representatives on the ISO CASCO WG57 for the revision of ISO/IEC 17043.



David Ducroq

Head of the Reference Measurement Laboratory - Weqas

David is the Principal Clinical Biochemist with a specific role in the management and development of services within the Reference Measurement Laboratory since 2002. With over 35 years laboratory experience, David has a keen interest in metrology and measurement traceability. He is currently the JCTLM Database Working Group (JCTLM-DBWG) review team leader for electrolytes and blood gases. He is a JCTLM-DBWG review team member for both the non-peptide hormones group and metabolites and substrates group. He is also a member

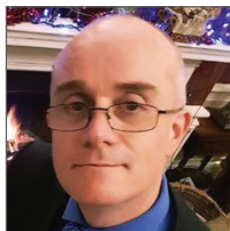
of the JCTLM-WG-TEP (Traceability: Education and Promotion). He is also a member of the Association for Clinical Biochemistry and Laboratory Medicine (ACB) Liquid Chromatography Tandem Mass Spectrometry Special Interest Group.



Ceri Parfitt

R&D Clinical Scientist - Weqas

Ceri Parfitt has recently joined the team at Weqas as a Clinical Scientist Specialist in EQA, with over 12 years' experience in Laboratory Medicine. Ceri is responsible for overseeing research projects within Weqas, developing new EQA programmes and assisting with quality improvement initiatives. She also supports the Duty Biochemist rota at the University Hospital of Wales in Cardiff, authorising laboratory results and providing clinical advice to healthcare professionals.



David Housley

Chair

Consultant Clinical Biochemist, Luton and Dunstable Hospital NHS FT

Clinical Scientist with proven academic and clinical research capability. Developing service strategy and delivering strategic plans at operational level. Since 2008 I have initiated and led on several projects to re-design the service, improve quality and safety and reduce cost. Currently blood sciences clinical governance lead.

Professional clinical interests include paediatrics, metabolic disease and nephrology. Other interests are laboratory quality, patient safety, risk reduction, improving efficiency and service redesign.



Sally Benton

Consultant Biochemist and Southern BCSP Hub Director

Sally Benton is Consultant Clinical Scientist in Biochemistry and Clinical Lead for Clinical and Specialist Biochemistry Services at Berkshire and Surrey Pathology Services. She is also Director of the Bowel Cancer Screening South England Hub at the Royal Surrey County Hospital, Guildford.

Sally has been working in Guildford since 2014. Her job is split between routine and specialist biochemistry services and the Bowel Cancer screening Hub. At the Bowel Cancer Hub she leads a team of research scientists who carry out research to further understand analytical aspects and clinical applications of the faecal immunochemical test for haemoglobin (FIT) and other biomarkers supporting early diagnosis of colorectal cancer. Sally and her team publish frequently in the field of FIT and early diagnosis of colorectal cancer, Sally was on the BSG/ ACP guideline group representing biochemistry. She co-chairs the World Endoscopy Organisation expert working group on FIT for Screening and is Chair of an International Federation of Clinical Chemistry working group to standardise and harmonise FIT testing.



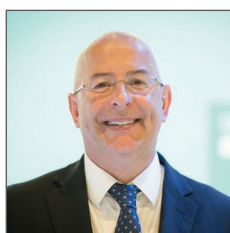
Emma English

University of Cambridge

Having completed her PhD in biochemistry Emma undertook her Clinical Scientist training at Addenbrooke's Hospital in Cambridge and holds HCPC registration. After several years at Addenbrooke's the opportunity arose to move into higher education and support the learning of others who also held a passion for clinical laboratory medicine. From there Emma moved to the University of Nottingham, School of Graduate Entry Medicine develop new courses for scientists and health professionals. Emma has a broad experience of teaching and learning on a wide range of health programmes at both undergraduate and postgraduate levels.

Whilst in the School of Health Sciences at UEA she was Director of Postgraduate Research as well as academic lead for the development courses from concept through to accreditation. Emma is now the head of the Medicine, Health and Life Sciences portfolio at the University of Cambridge, Institute of Continuing Education.

In her wider educational roles Emma is the Chair of an IFCC international education committee on diabetes biomarkers, which seeks to work with global stakeholders for the development and implementation of effective diabetes testing methods for all. The work of Emma and her team has a particular focus on working to enhance diagnostic provision in low resource settings, she has a suite of publications in this area and is a lead author on global guidelines around quality testing for diabetes, as well as several key World Health Organization (WHO) publications. She is a consultant to WHO as well as other health related NGOs.



Gordon Avery

Associate Scientific Director, Core Lab, Medical Affairs EMEA, Abbott Laboratories

Associate Scientific Director, Core Lab, Medical Affairs EMEA, Abbott Laboratories Gordon studied for a BSc in Biochemistry, and a MSc in Clinical Biochemistry at the University of London. Gordon is also a Chartered Scientist (CSci) and a Fellow of the Institute of Biomedical Scientists (FIBMS). He is currently an Associate Scientific Director in Core Lab Medical Affairs EMEA for Abbott Laboratories and manages the Northern and Eastern European areas. He has held scientific roles in the Diagnostics Division of Abbott Laboratories for the last 16 years and has worked for Abbott for over 27 years. He is a corporate representative for Abbott in the

IFCC Committee for the Standardisation of Thyroid Function Tests (IFCC C-STFT), IFCC committee for Bone Metabolism (IFCC C-BM) and the EFLM TFG-HIL (Sample Indices). Gordon is also a corporate representative on the ALM Scientific Affairs and Clinical Practice committee and the IBMS Clinical Chemistry Specialist Advisory Panel. He has interests in laboratory science, clinical chemistry and immunoassay.



POCT EQA
& MANAGEMENT

CARDIFF
2Q25



Early December



Cardiff, Venue - TBC

The 2025 Weqas Annual POCT Conference will take place in Cardiff in early December, venue to be announced soon.

This two-day event will focus on POCT EQA & Management, with a full programme to be announced later in the year.

FULL PACKAGE 1

		Price	Early Bird Price
Pre-Conference	Overnight Accommodation	£620	£590 + VAT
Day 1	Breakfast in the morning Full Day Conference Pass (inc. lunch) Conference Dinner Overnight Accommodation		
Day 2	Breakfast in the morning Full Day Conference Pass (inc. lunch)		

FULL PACKAGE 2

Day 1	Full Day Conference Pass (inc. lunch) Conference Dinner Overnight Accommodation	£450	£420 + VAT
Day 2	Breakfast in the morning Full Day Conference Pass (inc. lunch)		

DAY DELEGATE RATE

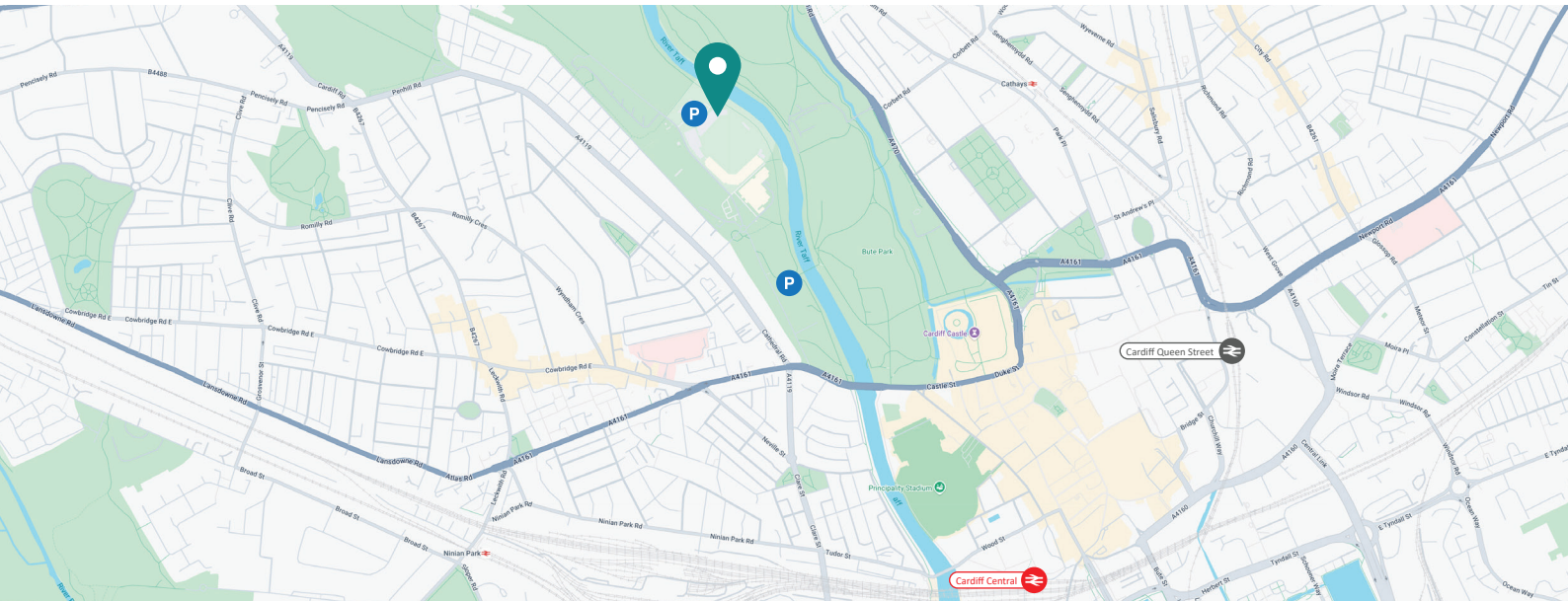
Day 1	Full Day Conference Pass (inc. lunch)	£120	£110 + VAT
Day 2	Full Day Conference Pass (inc. lunch)	£120	£110 + VAT

Please visit our dedicated conference website below, where you can pre-register for the conference and find further information.

<https://conference.weqas.com/pre-register>

CARDIFF 2Q25

17 JUNE 2025
Glamorgan Cricket Ground,
Sophia Gardens



Conference Address:

Glamorgan Cricket Ground
Sophia Gardens
Cardiff
CF11 9XR

Tel: 02920 419381



Our Address:

Weqas
Unit 6, Parc Ty Glas
Llanishen, Cardiff
CF14 5DU

Tel: 02921 832882