

Weqas

ANNUAL CONFERENCE



9th-10th DECEMBER 2025

Marriott Hotel, Cardiff

ANNUAL POCT
CONFERENCE

CARDIFF
2Q25

Sponsors:

nova
biomedical

STERILAB
SERVICES

a Abbott

sysmex

SIEMENS
Healthineers

Roche

Getting there

The conference will be held in the **'Cardiff Suite'** of the Marriott Hotel, Cardiff. The conference room is located to the left of the hotel's main reception desk, via the **'Bute Bar'**.



By Car:

Marriott Hotel
Mill Lane
Cardiff
CF10 1EZ



Parking:

The Hotel has its own paid car park for guests and visitors accessible via **Mill Lane**.
Additional parking can be found here: <https://conference.weqas.com/about/useful-links/>



Arriving By Train:

Cardiff Central is a 4 minute walk to the Hotel. Additional train information can be found here:
<https://conference.weqas.com/about/useful-links/>

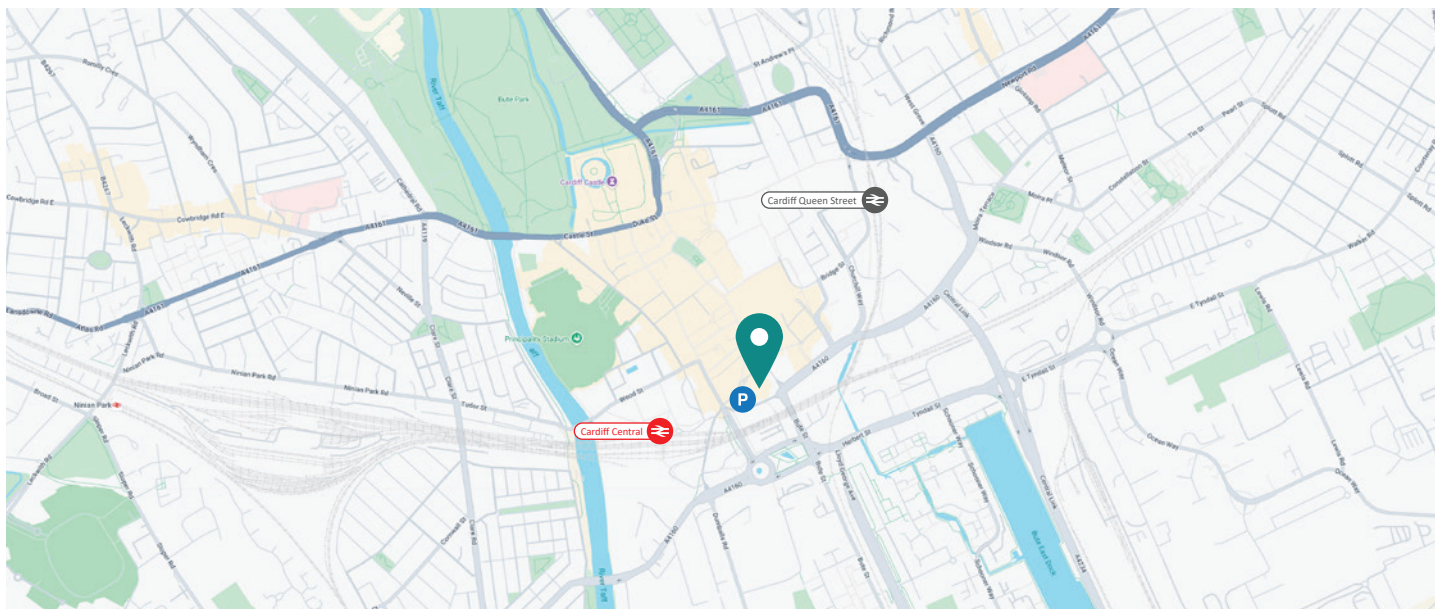


Arriving By Plane:

The Hotel is a 30 minute taxi ride from Cardiff Airport. Alternatively there are bus links from the airport to Rhoose or Barry Train Stations for onward connections to Cardiff Central.



Map:



Map Key



Marriott Hotel



Car park



Main Train station



Train station

Using the Conference Portal

We are committed to reducing our paper usage. Due to the success of the last couple of years, we are continuing to progress towards a paperless conference and will be using our conference portal. We will not be printing any presentations. After the conference, presentations will be available on <https://www.wegas.com/resourcelibrary/>.

How to access the conference portal

Scan the QR Code on the bottom right of your name badges or manually type the website. Open the link in your internet browser.

What is on the conference portal?

- View the event programme.
- Download the presentations.
- Download the posters displayed at the conference.
- Submit a question for a speaker.
- Submit your answer to one of the polls set by a speaker.
- Online feedback questionnaires.
- Request a CPD certificate.

You can access the presentations, submit questions in our Q&A section, and answer any poll questions through the QR code printed on the delegate badges that will be provided on the day. Below are the instructions on using the conference portal.

Download Presentations & Posters

A QR code will be printed on the bottom right of your name badge. Use your smartphone's camera to scan this image, you'll then be asked to open the link in your internet browser. Alternatively, you can manually type the website address that will be printed opposite the QR code.

This will take you to a webpage where you can select Day 1 or Day 2 (if applicable) and view the available presentations by clicking on the download link after the presentation title, you can also download the posters that are on display at the conference by selecting the 'Posters' tab towards the top of the page.

Q&A

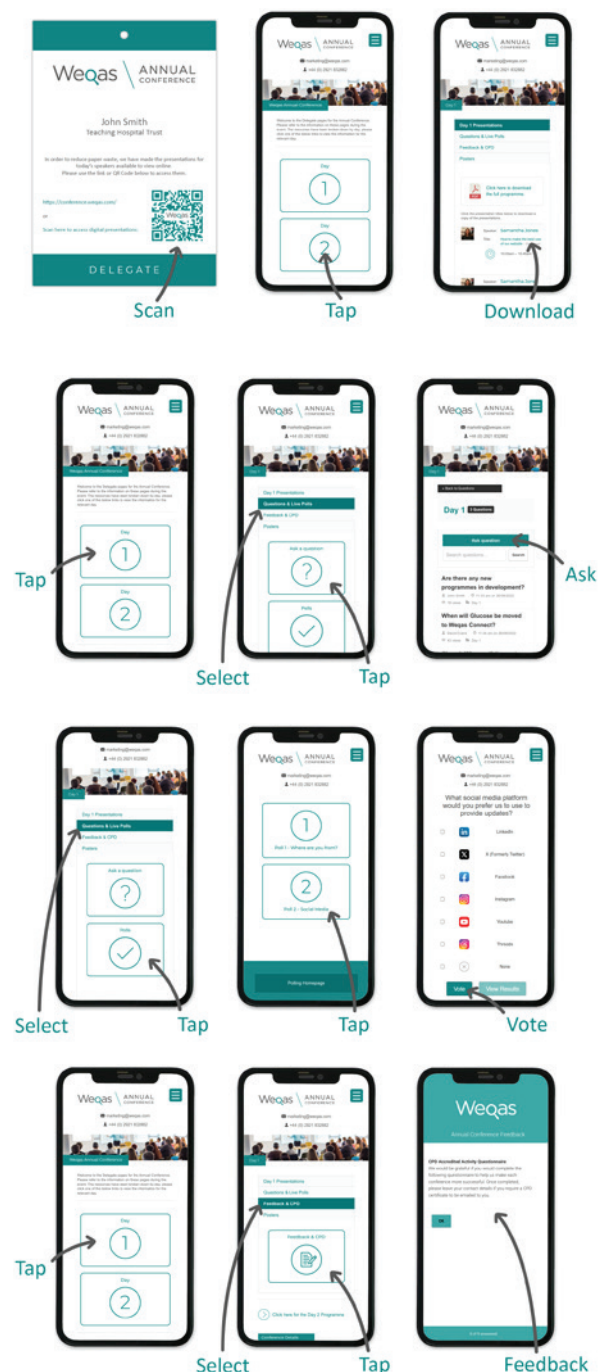
You will also see a tab for 'Questions & Live Polls'. By clicking the 'Ask a question' link, you can submit any questions you'd like to ask the speakers across both days of the conference. At the end of the talk, the speakers will aim to answer as many as they can in the time available.

Polls

Also, on the 'Questions & Live Polls' tab, we have added a 'Live Polls' link. This may be used by the speakers to get the views of delegates on a particular subject matter during a talk to support engagement.

Feedback & CPD Certificate

Finally, you will also see a tab for 'Feedback & CPD'. At the end of the conference, clicking the link on this tab will direct you to complete our online feedback questionnaire regarding your experience at our conference. This feedback will be used to help us make each conference more successful. By entering your name and email address at the end of this questionnaire you can request a CPD Certificate to be emailed to you.



Please Note: Times and schedule are a guide only and are subject to change.



Theme: POCT EQA Interpretation

Chair: Pat Twomey



Meet and greet / Registration - 9:00am - 9:50am



Introduction / Welcome - 9:50am - 10:00am



Speaker: Gareth Davies & Samantha Jones

Title: POCT EQA Report Interpretation



10:00am - 11:00am



Break - 11:00am - 11:20am



Speaker: Samantha Jones

Title: POCT EQA Case Studies



11:20am - 12:50pm



Lunch - 12:50pm - 1:50pm

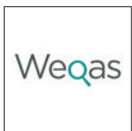


Speaker: Gareth Davies & Samantha Jones

Title: Weqas Connect Update



1:50pm - 2:10pm



Speaker: Weqas

Title: Connectivity updates



2:10pm - 2:40pm



Speaker: Abbott

Title: Connectivity



2:40pm - 3:10pm



Break - 3:10pm - 3:30pm



Speaker: Siemens

Title: Connectivity



3:30pm - 4:00pm



Speaker: Gareth Davies & Ceri Parfitt

Title: POCT Performance Update



4:00pm - 5:00pm



Conference Dinner Welcome Drinks - 7:30pm

Conference Dinner - 8:00pm

Please Note: Times and schedule are a guide only and are subject to change.



Theme: POCT Applications, a “diagnostic anywhere” approach and innovation
Chair: Emma English / Garry John



Meet and greet / Registration - 9:00am - 9:20am



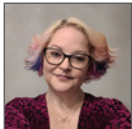
Introduction / Welcome - 9:20am - 9:25am



Speaker: Bernie Croal
Title: 10-year NHS Plan



9:25am - 10:10am



Speaker: Katy Heaney
Title: Opportunities for high quality diagnostics in community



10:10am - 10:45am



Break - 10:45am - 11:05am



Speaker: Philip Turner
Title: Implementing IVDs in community healthcare: challenges and possible solutions



11:05am - 11:40am



Speaker: Sian Hilton
Title: POCT Pharmacogenomics, the PALOH-UK Study



11:40am - 12:15pm



Lunch - 12:15pm - 1:15pm



Speaker: Eric Kilpatrick
Title: Clinical Utility of Ketone Testing



1:15pm - 2:00pm



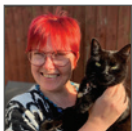
Speaker: Emma English
Title: POCT Haemoglobin A1c Performance



2:00pm - 2:35pm



Break - 2:35pm - 2:50pm



Speaker: Catherine Moore
Title: Use of Respiratory Virus POCT in ED, are we detecting current virus strains?



2:50pm - 3:25pm



Speaker: Annette Thomas
Title: Evolving role of pharmacies



3:25pm - 4:00pm



Speaker: Gareth Davies
Title: Future Developments / Conference Closing Speech



4:00pm - 4:25pm

Close of conference - 4:25pm



Annette Thomas

Director - Weqas

Annette Thomas is a Consultant Clinical Biochemist at Cardiff and Vale University Health Board with over 40 years' experience in Laboratory Medicine, over 20 years of which has been as Director of Weqas, a well-respected International EQA provider and Reference Measurement Laboratory.

Annette is also the National Point of Care (POCT) Clinical lead for Wales, a seconded position to the Wales NHS Executive responsible for delivering the strategy plan for POCT. She represents POCT on Welsh Government advisory Committees and chairs the National POCT Strategic Board and the POCT Delivery Group. She is a member of the International Federation of Clinical Chemistry and Laboratory Medicine (IFCC) Task Force on Global Lab Quality and past chair of the IFCC Committee on Analytical Quality.

She has previously held posts on the Executive Board of the European Committee for External Quality Assurance Programmes in Laboratory Medicine (EQALM), chair of the All Wales Clinical Biochemistry Audit Group and chair of the National Clinical Biochemistry and Laboratory Medicine (ACB) Audit Committee in the UK. In 2019 she received the EQALM Adam Uldall Award for her contribution to promoting quality in laboratory medicine and the Healthcare Science Lifetime Achievement award from the Welsh Government.



Gareth Davies

Deputy Director, Principal Biochemist, R and D Manager - Weqas

Gareth Davies is the Deputy Director, Principal Biochemist and Research and Development Manager at Weqas with over 15 years' experience in Laboratory Medicine. Gareth is responsible for new programme development and provides EQA interpretation, support, and troubleshooting. He is a current member of the National Clinical Biochemistry Audit Group, the All-Wales Clinical Biochemistry Audit Group, and the ACB Pre-Analytical Phase Special Interest Group (ACB PA SIG).



Samantha Jones

Operations Manager - Weqas

Samantha is the Operations Manager at Weqas with over 30 years' experience in Laboratory Medicine. Sam worked as a Biomedical Scientist at the Medical Biochemistry and Immunology Department at the University Hospital of Wales in Cardiff before moving to Weqas in 1998. Since 2010 she has been employed as the Operations Manager responsible for the day to day management of EQA / IQC services.

She is a current member of the IFCC Working Group on FIT, represents Weqas on 2 working groups (POCT and ISO 17043) at EQALM (The European Organisation for External Quality Assurance Providers in Laboratory Medicine) and represents Weqas at the United Kingdom Proficiency Testing Committee. She was also one of the two UK BSI representatives on the ISO CASCO WG57 for the revision of ISO/IEC 17043.



Ceri Parfitt

R&D Clinical Scientist - Weqas

Ceri Parfitt has recently joined the team at Weqas as a Clinical Scientist Specialist in EQA, with over 12 years' experience in Laboratory Medicine. Ceri is responsible for overseeing research projects within Weqas, developing new EQA programmes and assisting with quality improvement initiatives. She also supports the Duty Biochemist rota at the University Hospital of Wales in Cardiff, authorising laboratory results and providing clinical advice to healthcare professionals.



Pat Twomey

Chair - Day 1

Clinical Professor - University College Dublin

Professor Patrick Twomey is consultant chemical pathologist in St. Vincent's University Hospital, Dublin, the Laboratory Director for Clinical Chemistry within the St Vincent's Hospital Group and Clinical Professor in the School of Medicine, University College Dublin. He obtained an Intercalated BSc in Biochemistry from University College Cork before being awarded his Medical degree. He is a Fellow of the Royal College of Physicians of Ireland, the Faculty of Pathology at the Royal College of Physicians of Ireland and of the Royal College of Pathologists where he also is an examiner. He is the President of the UEMS Section of Laboratory Medicine (European Union Medical Specialists), Internal Auditor UEMS and

National Speciality Director Chemical Pathology, Royal College of Physicians of Ireland. He has co-authored one text book, several book chapters and over 100 original publications in the fields of clinical biochemistry, metabolic medicine, lipids and nutrition. He is the Best Practice Editor of the Journal of Clinical Pathology and is a member of the editorial boards of the Journal of Clinical Pathology, the British Medical Journal Case Reports and the Clinical Biochemistry journal. He was previously the Vice Chair of the UK Joint Working Group on Quality Assessment in Pathology and past Chair of the Chemical Pathology National Quality Assurance Advisory Panel within the Royal College of Pathologists - currently he sits on the Vitamin D EQA Scheme (DEQAS) advisory panel and the Weqas Steering Committee. He runs clinical metabolic services for dyslipidaemia.



Emma English

Chair - Day 2

Associate Professor in Medical and Health Sciences - University of Cambridge

Having completed her PhD in biochemistry Emma undertook her Clinical Scientist training at Addenbrooke's Hospital in Cambridge and holds HCPC registration. After several years at Addenbrooke's the opportunity arose to move into higher education and support the learning of others who also held a passion for clinical laboratory medicine. From there Emma moved to the University of Nottingham, School of Graduate Entry Medicine develop new courses for scientists and health professionals. Emma has a broad experience of teaching and learning on a wide range of health programmes at both undergraduate and postgraduate levels. Whilst in the School of Health Sciences at UEA she was Director of Postgraduate Research as well as academic lead for the development courses from concept through to accreditation. Emma is now the head of the Medicine, Health and Life Sciences portfolio at the University of Cambridge, Institute of Continuing Education.

In her wider educational roles Emma is the Chair of an IFCC international education committee on diabetes biomarkers, which seeks to work with global stakeholders for the development and implementation of effective diabetes testing methods for all. The work of Emma and her team has a particular focus on working to enhance diagnostic provision in low resource settings, she has a suite of publications in this area and is a lead author on global guidelines around quality testing for diabetes, as well as several key World Health Organization (WHO) publications. She is a consultant to WHO as well as other health related NGOs.



Garry John

Chair - Day 2

Consultant Clinical Biochemist - The Norwich Medical School

Garry has held senior positions in UK hospitals for 30 years and has driven change locally and nationally. In addition to leading the Department of Clinical Biochemistry within the Norfolk and Norwich University Hospital, he has been Clinical Director, Associate Medical Director and Director of Research. He is additionally an Honorary Professor in the Norwich Medical School. Garry has had an influence on scientific work nationally and internationally; he has served on ACB Council and his interest in quality has been demonstrated by his significant involvement in UK EQA Schemes (UKNEQAS and Weqas).

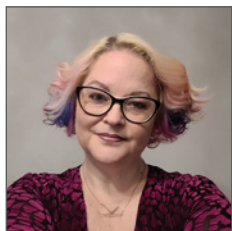
But most notably Garry has had a long and successful association with the International Federation of Clinical Chemistry and Laboratory Medicine; he has chaired three active committees: first a Working Group (WG) on Haemoglobin A1c standardisation, the first WG to fully complete all tasks allocated; then chairing a Task Force on implementation of HbA1c standardisation where he worked closely with manufacturers and professional organisations achieving global standardisation. He also chaired a committee within the Educational Division on Education in the use of Biomarkers in Diabetes. He is widely recognised and respected within the scientific community and has a long experience in delivering results.



Bernie Croal

President - Royal College of Pathologists

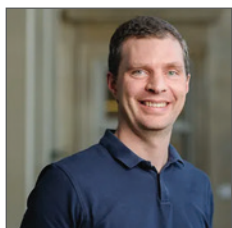
Dr Bernie Croal is the current President of the Royal College of Pathologists (RCPATH) in the United Kingdom. He is a Chemical Pathologist from Aberdeen and has spent a long career in various leadership roles within NHS Scotland including clinical director and regional lead for pathology, NHS Scotland demand optimisation lead and chair of the Scottish Clinical Biochemistry Network (SCBN). He is also a Past President of the Association for Laboratory Medicine UK (2021-23). Within RCPATH he has chaired many committees and served as Vice-President from 2011-14 and is now President until November 2026.



Katy Heaney

Consultant Clinical Scientist, POCT Speciality lead - Frimley Health NHSFT

Katy has over 20 years' NHS experience in Clinical Biochemistry and Point of Care Testing (POCT). She is Consultant Specialty Lead for POCT across Berkshire and Surrey Pathology Services, the UK's only multi-Trust UKAS-accredited POCT service under ISO 15189:2022. She is Clinical Director of Qpoint, an ISO-accredited POCT EQA scheme with 10,000+ participants. Katy chairs NHS England's Southeast POCT group and contributed to national POCT guidance. During the pandemic, she led rapid COVID testing deployment. In 2024–25, she was seconded as Chief Healthcare Scientist at Frimley Health. Katy is a UK expert in POCT, driving quality, policy, and innovation.

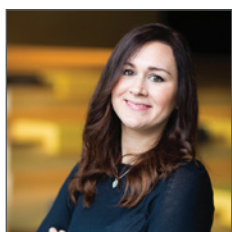


Philip Turner

Senior Researcher and Director of Operations - NIHR HealthTech Research Centre in Community Healthcare

Dr Phil Turner is a senior researcher in the Infections, Respiratory and Acute care Research Group and the Director of Operations of the NIHR HealthTech Research Centre in Community Healthcare based at the Nuffield Department of Primary Care Health Sciences at the University of Oxford. His research interests include the evaluation of diagnostic tests and healthcare technologies and the diagnosis and management of common infections and approaches to antimicrobial stewardship in community healthcare. He also has an interest in the identification of barriers to implementation of diagnostics in decentralised settings. Recent activities include co-leadership of the RAPTOR-C19 evaluations of point-of-

care tests for SARS-CoV-2 and other respiratory viruses in community care, trial management support for the trans-European VALUE-Dx PRUDENCE RCT of the clinical and cost-effectiveness of diagnostic interventions for RTI, and co-investigation of the TOUCAN and EVOLUTION evaluations of novel diagnostics for acute uncomplicated UTI.



Sian Hilton

Project Manager / Clinical Trial Manager - Manchester University NHSFT

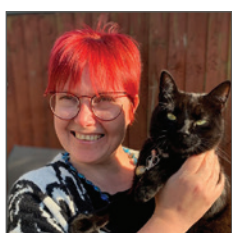
Sian Hilton is the Project Manager for the PALOH-UK programme at Manchester University NHS Foundation Trust, supporting the national implementation study of a pharmacogenomic point-of-care test. With over 12 years' experience in molecular diagnostics and health innovation, she has managed projects across research, development, and clinical implementation, including leading assay development for genetic tests at Yourgene Health. Sian is committed to collaborating with cross-functional teams to translate innovative diagnostic solutions into routine patient care.



Eric Kilpatrick

Consultant in Chemical Pathology - Manchester University NHSFT

Professor Eric Kilpatrick is a Consultant in Chemical Pathology at Wythenshawe Hospital in Manchester. He is also an Honorary Professor of Clinical Biochemistry at Hull York Medical School and was Professor of Pathology and Laboratory Medicine at Weill Cornell Medicine, Cornell University. He has previously been Division Chief for Clinical Biochemistry at Sidra Medicine in Doha, Qatar, and a Consultant in Chemical Pathology at both Manchester Royal Infirmary and Hull Royal Infirmary. He is a past President of the Association for Clinical Biochemistry and Laboratory Medicine (ACB), previous Chair of the Science Committee of the European Federation of Clinical Chemistry and Laboratory Medicine (EFLM), and current Chair of the Royal College Specialty Advisory Committee. He has a long-standing research interest in laboratory medicine and diabetes and has published over 200 papers on these and other topics.



Catherine Moore

Consultant Clinical Scientist - Public Health Wales

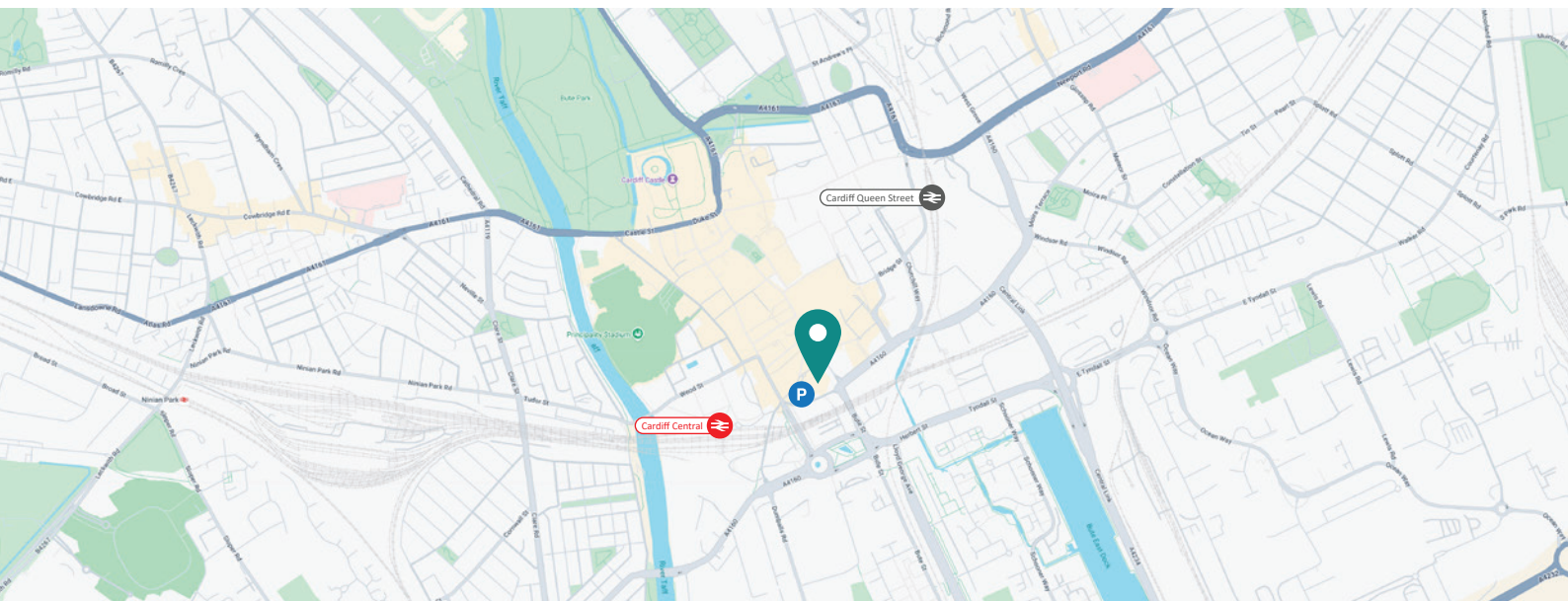
Catherine Moore is a HCPC registered consultant clinical scientist in Virology with almost 30 years' experience, working in the Public Health Wales Specialist Virology Centre in Cardiff. Catherine started her career in clinical virology initially as a biomedical scientist (MLSO in old money), then as a clinical scientist focussed on developing and implementing molecular based tests for viral infection. Her PhD is based on the development and implementation of a molecular diagnostic service for the detection of respiratory viruses in Wales. Catherine has over 150 Publications in the field of clinical and epidemiological virology.

Catherine is the Public Health Wales lead for molecular service development and the director of the National influenza centre for Wales where she has oversight of the virological surveillance of respiratory viruses, and emerging and re-emerging viral infections. In addition, she supports and delivers the clinical virology service for Wales having achieved her FRCPath part 2 exam in Clinical Virology in 2017. Catherine was awarded an MBE for her work responding to the SARS-CoV-2 pandemic in the Queen's Birthday honours in 2020. Catherine is a not very good gardener but enjoys pottering about with her two black cats Henry Plantagenet and Elizabeth Tudor.

CARDIFF 2Q25

9th-10th DECEMBER 2025

Marriott Hotel, Cardiff



Conference Address:

Marriott Hotel
Mill Lane
Cardiff
CF10 1EZ

Tel: 02920 399944



Our Address:

Weqas
Unit 6, Parc Ty Glas
Llanishen, Cardiff
CF14 5DU

Tel: 02921 832882